


## Handleiding IP65 LED Plafonnière



KOOPMANINTERLIGHT.NL

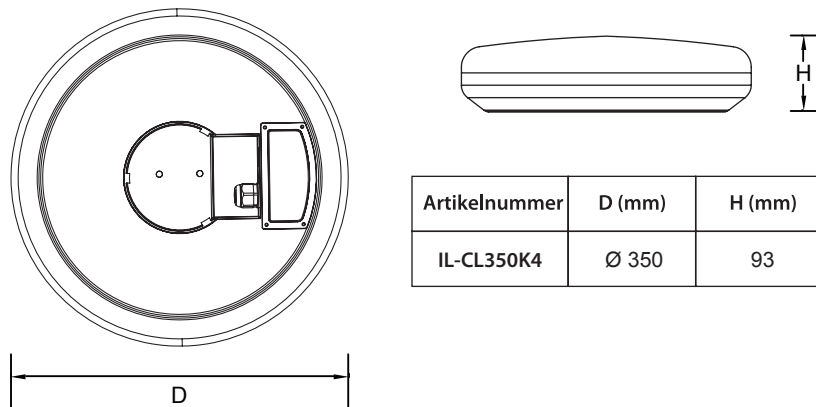


4000K COOL	2000 LUMEN	26 WATT	50.000 UUR	/110 GRADEN
CRI >80	PF 0.9	IP 65		energy A <sup>+</sup>

## HANDLEIDING IL-CL350K4

Lees voor gebruik eerst de installatie instructie en bewaar deze voor eventueel toekomstig gebruik.

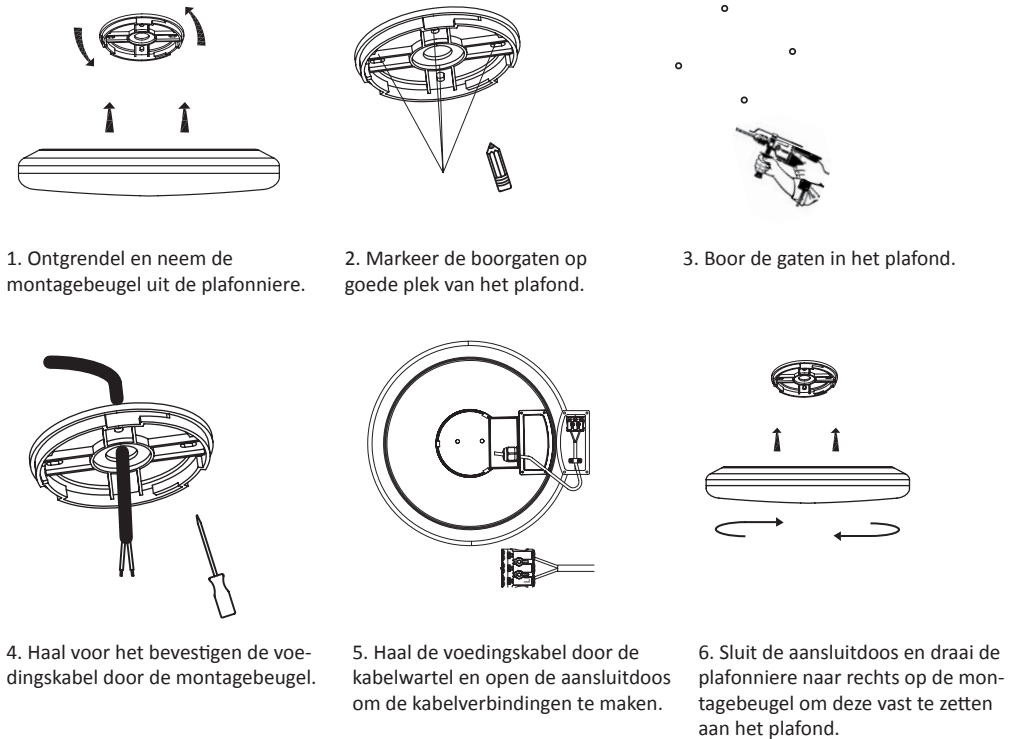
### Afmetingen



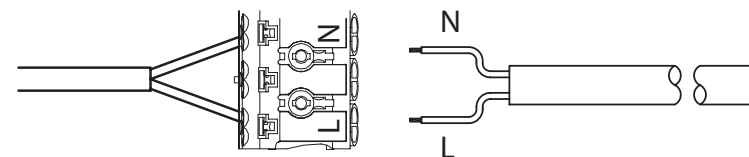
### Technische specificaties

Info	Technische gegevens	Info	Technische gegevens
Afmetingen (mm)	Ø 350	Hoek/graad	110 ± 10 °
Vermogen/W	26 W	Kleur	4000K
Spanning/V	220 – 240Vac	Materiaal	ABS
Powerfactor	0.9	Diffuser	PC
Beschermingsgraad IP	IP65	Levensduur/u.	50.000
LED type	SMD	CRI	>80
Chip	SAMSUNG		

### Installatie



### Aansluitschema



### Algemene informatie

- Gebruik een droge of licht vochtige doek voor het schoonmaken.
- Gebruik geen schoonmaakmiddelen voor het schoonmaken.
- Pas op voor elektrische schokken.
- Sluit de stroom af voor u met de installatie begint.


**LET OP:** Dit product mag alleen geïnstalleerd worden door een erkend installateur.

# Anleitung LED Plafonnière



[KOOPMANINTERLIGHT.NL](http://KOOPMANINTERLIGHT.NL)

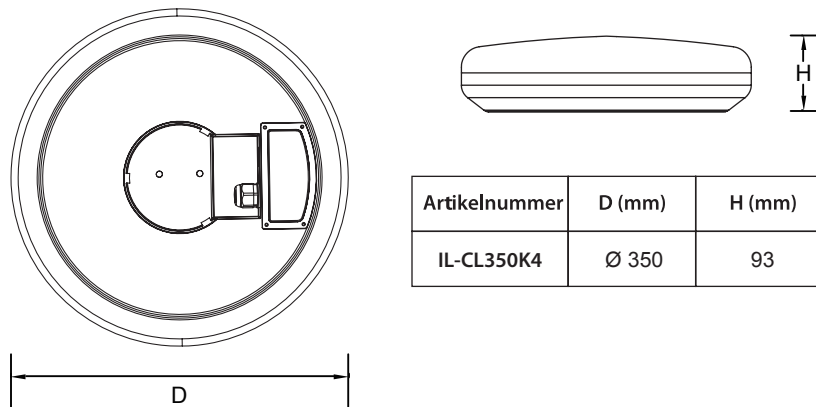


4000K COOL	2000 LUMEN	26 WATT	50.000 UUR	/110 GRADEN
CRI >80	PF 0.9	IP 65		energy A <sup>+</sup>

## ANLEITUNG IL-CL350K4

Lesen Sie diese Anleitung vor Gebrauch aufmerksam durch und bewahren Sie diese für einen späteren Gebrauch gut auf.

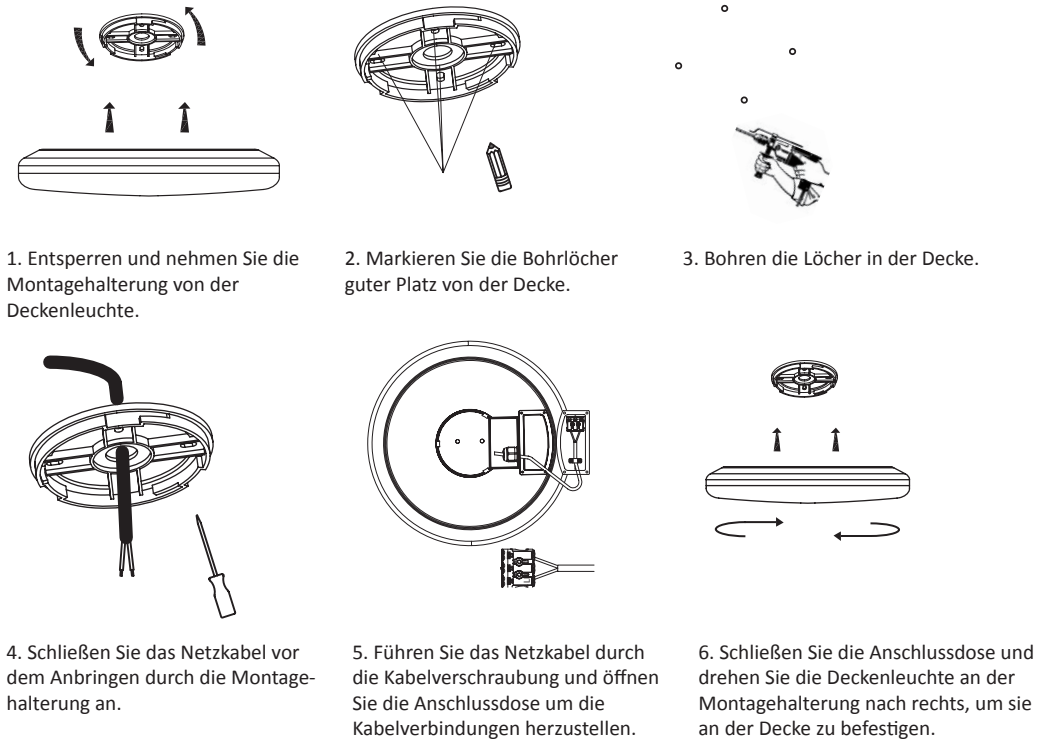
### Abmessungen



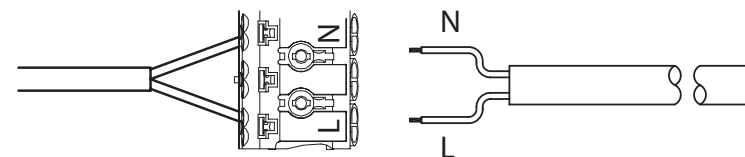
### Technische Spezifikationen

Eigenschaft	Werte	Eigenschaft	Werte
Abmessungen	Ø 350	Winkel / Grad	110 ± 10 °
Leistung/W	26 W	Farbetemperatur	4000K
Spannung/V	220 – 240Vac	Gehäuse	ABS
Leistungsfaktor	0.9	Diffuser	PC
Schutzgrad IP	IP65	Lebensdauer/u.	50.000
LED type	SMD	CRI	>80
Chip	SAMSUNG		

### Installation



### Anschlussdiagramm



### Allgemeine Informationen

- Verwenden Sie ein trockenes oder leicht feuchtes Tuch zum Reinigen.
- Verwenden Sie keine Reinigungsmittel zur Reinigung.
- Schützen Sie sich vor einem elektrischen Schlag.
- Schalten Sie die Stromversorgung aus, bevor Sie mit der Installation beginnen.

**ACHTUNG:** Die Installation muss von einer elektrotechnischen Fachkraft erfolgen!


# Manual

## LED Plafonnière



[KOOPMANINTERLIGHT.NL](http://KOOPMANINTERLIGHT.NL)

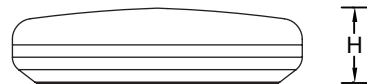
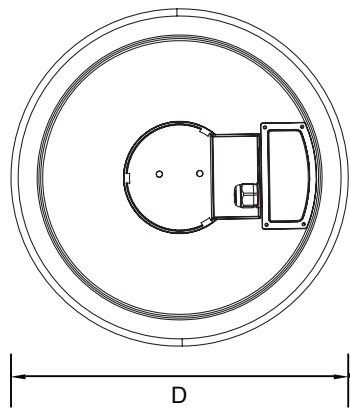


4000K COOL	2000 LUMEN	26 WATT	50.000 UUR	/110 GRADEN
CRI >80	PF 0.9	IP 65		energy A <sup>+</sup>

## MANUAL IL-CL350K4

Read this manual carefully and keep it for future use.

### Dimensions

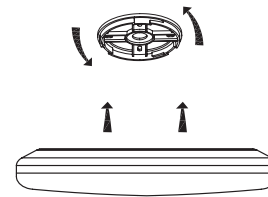


Article number	D (mm)	H (mm)
IL-CL350K4	Ø 350	93

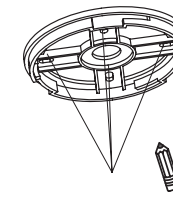
### Technical specifications

Info	Technical specs	Info	Technical specs
Dimensions	Ø 350	Angle / degree	110 ± 10 °
Power/W	26 W	Colour	4000K
Input voltage/V	220 – 240Vac	Material	ABS
Powerfactor	0.9	Diffuser	PC
Degree of protection IP	IP65	Lifespan/h.	50.000
LED type	SMD	CRI	>80
Chip	SAMSUNG		

### Installation



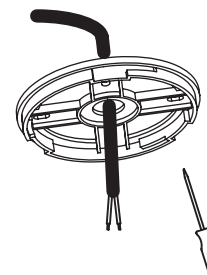
1. Unlock and take out the mounting bracket.



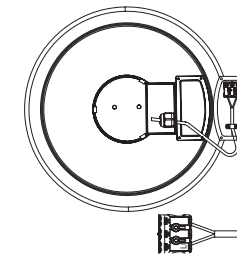
2. Mark the drilling holes on the suitable location of the ceiling.



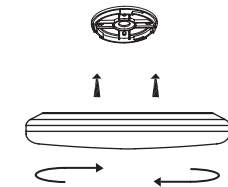
3. Drilling installation holes.



4. Let the power cable pass through the mounting bracket before fixing the mounting bracket with screws.

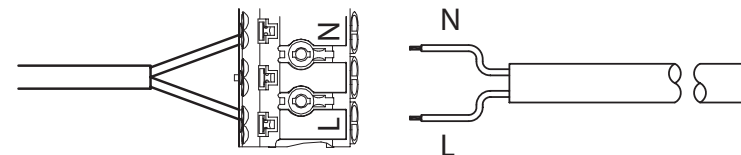


5. Let the power cable pass through the cable gland and open the junction box to do the cable connections.



6. Close the junction box and turn the ceiling light to the right on the mounting bracket to secure it to the ceiling.

### Connection Diagram



### General information

- Use a dry or slightly damp cloth for cleaning.
- Do not use cleaning agents for cleaning.
- Beware of electric shocks.
- Turn off power before installation.

**WARNING:** This product may only be installed by a recognized installer.